



## Diesel Vehicle Tank Capacity Less than 100 Liters

- Improve Engine Performance
- Reduce Fuel Consumption
- Minimize Exhaust Emissions
- Environmental Friendly
- Enhance Horsepower

# D11

## USER'S MANUAL



All copyrights of the diagrams/photos and contents in this User's Manual are owned by Moletch International Limited, any unauthorized copy and/or use of the diagrams/photos and/or contents will be prosecuted to the full extent under the laws without any exception.

Thank you for purchasing our product, the purpose of this User's Manual is to guide you how to use this product correctly and safely. Please read this User's Manual carefully and understand its contents before using the product. Please keep this User's Manual properly for any future reference.

## Main Functions:



### Enhance Horsepower

Greentech Fuel Saving Device includes Greentech Molecule Enhancer and Air Refining Device. As long as the contact between fuel and Greentech Molecule Enhancer was established, the molecule enhancer can change the aggregation of molecules from larger molecule clusters to a smaller ones or even single molecule by breaking the Van der Waals force between the fuel molecules. Moreover, the Greentech Air Refining Device can purify the air and increase the oxygen level in the air by neutralizing the pollutant floating in the air such as dust, emissions, germs, pollen, tobacco smoke, molds and all other species possess positive ions. The improvement of fuel and air can achieve the better combustion reaction to generate more horsepower and torque.





## Reduces Fuel Consumption

According to the lab research from Taipei Medical University, the surface tension of the fuel was decreased by contacted with Greentech Molecule Enhancer; causing the smaller droplets of the fuel after it was ejected from the nozzle. The smaller droplets, exposing larger surface area in the air, contact with oxygen for better combustion reaction, and hence, better fuel efficiency.

---



## Minimize Exhaust Emissions

The large molecule clusters of the fuel always cause the incomplete combustion and produce emissions such as carbon monoxide (CO), non-methane hydrocarbons (NMHC), hydrocarbons (HC), and nitrogen oxides (NOx).

The Greentech Molecule Enhancer can change the aggregation of fuel molecules from large clusters to a single molecule by breaking the Van der Waals force between the fuel molecules. The smaller molecule clusters of the fuel can then achieve the complete combustion to reduce the exhaust emissions.





## **Environmental Friendly**

Since 2000, Moletech International Limited has been devoted to create the energy saving products and environmental friendly products. All the Greentech product materials are environmental friendly and conformed to the RoHS standard. By using Greentech Fuel Saving Device, not only can it reduce the fuel consumption, but also lower the exhaust emissions.

---



## **Lasts for 10 Years**

Greentech Fuel Saving Device applies our patented Molecule Enhance Technology which takes advantage of physical phenomenon instead of chemical reaction; therefore, there is no chemical reaction and catalyst involved. None of the materials used will be consumed during the process. Because of the physical natural, many research reports suggest, our patented technology can last for a very long time, more than 10 years at least.



## Introduction

Greentech Fuel Saving Device applies the newest Molecule Enhance Technology which is developed by Moletech International Limited and Taipei Medical University. It includes the Fuel Molecule Enhancer and Air Refining Device. It can be fitted into all kinds of the vehicle, and it does not affect the vehicle warranty because there is no modification work on the vehicle.

Greentech Fuel Saving Device was initially developed to decrease harmful exhaust pollutants. Over the past seven years, we have tested hundreds of vehicles and found that those using our fuel saver not only emitted less harmful exhaust, but also gained more miles per gallon. In addition, many vehicle owners have reported a rise in horsepower and a smoother running engine after using our fuel saver. We double-checked our results by sending our fuel saving device to California CEE (USA EPA & CARB certified testing center), TUV Rheinland Group, and SGS, all of whom verified and supported our research and development data.

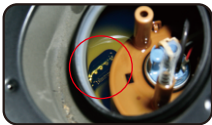
We are now applying our patented technology on medical uses and also published our research and development on several medical magazines. In the future, Moletech International Limited will continue developing more products that are useful, convenient, and environmentally friendly to make your life feel better. For more information, please visit [www.moletech.com](http://www.moletech.com).



## Installation Procedures:

### 1) Install the Greentech Molecule Enhancer (Greentech Molecule Enhancer)

**Warning:** Gasoline (Petrol) and Diesel are hazardous substance and must be handled with extreme care. We strongly recommended our customer could perform this installation in the professional maintenance store.



The Greentech Molecule Enhancer has to be placed inside the fuel tank. Usually, there are three ways to install the Greentech Molecule Enhancer. The workshop or mechanic will need to identify the most suitable installation procedures:

- Though the sender or fuel pump via access plate. An access plate is usually under the back seat or in the boot.
- Though the Neck of the tank by removing the anti-siphon.



- Though the sender or fuel pump by removing the fuel tank.  
NOTE: This method is only used if your vehicle can not be installed by the previous methods.
- Though the tank filler.  
NOTE: This method is only used if you can see the fuel directly from the tank filler and there is no anti-siphon device. For example, most of the motorcycles and huge trucks are suitable for this method.

## 2) Install the Greentech Air Refining Device (Greentech Air Refining Device)

Install the Greentech Air Refining Device into the air intake cube or inside the air filter housing. It is mounted on the pre-filtered (before the air is filtered) area of the air filter. Please find a suitable location to attach the Greentech Air Refining Device. You may also use the supplied cable tie to secure it.



## **Fuel Saving Tips: Drive more efficiently**

### **Drive Sensibly (5 – 33%)**

Aggressive driving (speeding, rapid acceleration and braking) will waste gas. It can lower your gas mileage by 33 percent at highway speeds and by 5 percent around town. Sensible driving is also safer for everyone.

---

### **Observe the Speed Limit (7 – 23%)**

While each vehicle reaches its optimal fuel economy at a different speed (or range of speeds), gas mileage usually decreases rapidly at speeds above 60 mph. Observing the speed limit is also safer.

---

### **Remove Excess Weight (1 – 3%)**

Avoid keeping unnecessary items in your vehicle, especially heavy ones. An extra 100 pounds in your vehicle could reduce your MPG by up to 2 percent. The reduction is based on the percentage of extra weight relative to the vehicle's weight and affects smaller vehicles more than larger ones.

---

### **Avoid Excessive Idling**

Idling gets 0 miles per gallon. Cars with larger engines typically waste more gas at idle than do cars with smaller engines.

---

### **Use Cruise Control**

Using cruise control on the highway helps you maintain a constant speed and, in most cases, will save gas.





## Use Overdrive Gears

When you use overdrive gearing, your car's engine speed goes down. This saves gas and reduces engine wear.

### Fuel Saving Tips: Keep your car in shape

## Keep Your Engine Properly Tuned (4%)

Fixing a car that is noticeably out of tune or has failed an emissions test can improve its gas mileage by an average of 4 percent, though results vary based on the kind of repair and how well it is done.

Fixing a serious maintenance problem, such as a faulty oxygen sensor, can improve your mileage by as much as 40 percent.

## Keep Tires Properly Inflated (up to 3%)

You can improve your gas mileage by around 3.3 percent by keeping your tires inflated to the proper pressure. Under-inflated tires can lower gas mileage by 0.3 percent for every 1 psi drop in pressure of all four tires. Properly inflated tires are safer and last longer.

The proper tire pressure for your vehicle is usually found on a sticker in the driver's side door jamb or the glove box and in your owner's manual. Do not use the maximum pressure printed on the tire's sidewall.

## Use the Recommended Grade of Motor Oil (1 – 3%)

You can improve your gas mileage by 1-2 percent by using the manufacturer's recommended grade of motor oil. For example,



using 10W-30 motor oil in an engine designed to use 5W-30 can lower your gas mileage by 1-2 percent. Using 5W-30 in an engine designed for 5W-20 can lower your gas mileage by 1-1.5 percent. Also, look for motor oil that says “Energy Conserving” on the API performance symbol to be sure it contains friction-reducing additives.

---

## **Replacing a Clogged Air Filter on Modern Cars Improves Performance but Not MPG**

A new study shows that replacing a clogged air filter on cars with fuel-injected, computer-controlled gasoline engines does not improve fuel economy but it can improve acceleration time by around 6 to 11 percent. This kind of engine is prevalent on most gasoline cars manufactured from the early 1980s onward. Tests suggest that replacing a clogged air filter on an older car with a carbureted engine may improve fuel economy 2 to 6 percent under normal replacement conditions or up to 14 percent if the filter is so clogged that it significantly affects drivability.

### **Fuel Saving Tips: Planning & Combining Trips**

Combining errands into one trip saves you time and money. Several short trips taken from a cold start can use twice as much fuel as a longer multipurpose trip covering the same distance when the engine is warm. Trip planning ensures that traveling is done when the engine is warmed-up and efficient, and it can reduce the distance you travel.



## Commuting

1. Stagger your work hours to avoid peak rush hours.
2. Drive your most fuel-efficient vehicle
3. Consider telecommuting (working from home) if your employer permits it.

Take advantage of carpools and ride-share programs. You can cut your weekly fuel costs in half and save wear on your car if you take turns driving with other commuters. Many urban areas allow vehicles with multiple passengers to use High Occupancy Vehicle (HOV) lanes which are typically less congested, further improving your fuel economy.

## Traveling

1. A roof rack or carrier provides additional cargo space and may allow you to meet your needs with a smaller car. However, a loaded roof rack can decrease your fuel economy by 5 percent. Reduce aerodynamic drag and improve your fuel economy by placing items inside the truck whenever possible.
2. Avoid carrying unneeded items, especially heavy ones. An extra 100 lbs in the trunk reduces a typically car's fuel economy by 1-2 percent.

\* Source from <http://www.fueleconomy.gov/feg/drive.shtml>



## Notice

- 1) It is important to note that the fuel saving result varies from season to season. According to the research from the U.S. Environmental Protection Agency and Moletech testing data, the fuel consumption of a vehicle in the Winter season could be up to 20% higher than the Summer season. Although Greentech Fuel Saving Device cannot change the fuel saving difference caused by the temperature, it can still work properly in all seasons to save your fuel as much as possible.
- 2) Actual results may vary. Fuel savings can be higher or lower depending on the engine model, fuel quality, cargo load weight, weather, traffic, road conditions, maintenance conditions, and driving conditions. Please see the figure below for more details:



<b>Effect</b>	<b>Conditions</b>	<b>Average Fuel Economy Reduction</b>	<b>Maximum Fuel Reduction</b>
Temperature	20°F vs 77°F	5.3 %	13 %
Head Wind	20 mph	2.3 %	6 %
Hills/ Mountains	7% road grade	1.9 %	25 %
Poor Road Conditions	Gravel, curves, slush, snow, etc	4.3 %	50 %
Traffic Congestion	20 vs 27 mph average speed	10.6 %	15 %
Highway Speed	70 vs 55 mph	N/A	25 %
Acceleration Rate	"Hard" vs "Easy"	11.8 %	20 %
Wheel Alignment	1/2 inch	< 1 %	10 %
Tire Type	Non-radial vs radial	< 1 %	4 %
Tire Pressure	15 psi vs 26 psi	3.3 %	6 %
Air Conditioning	Extreme Heat	21 %	N/A
Defroster	Extreme Use	Analogous to A/C on some vehicle	
Idling/ Warm up	Winter vs Summer	Variable with Driver	20 %
Windows	Open vs Closed	Unknown but likely small	

Source from USA EPA 420-F-95-003, 1995. (<http://www.epa.gov/otaq/rfgecon.htm>)



## GREENTECH Model Series:



Greentech Molecule Enhancer

Greentech Air Refining Device



### Model **G10**

For Motorcycle / Generator

Suitable Fuel Type: Petrol, Gasoline Fuel

Tank Capacity: Less than 100 liters

Content: Greentech Molecule Enhancer \*1



### Model **G11**

For Gasoline Vehicle

Suitable Fuel Type: Petrol, Gasoline Fuel

Tank Capacity: Up to 100 liters

Content: Greentech Molecule Enhancer \*1

Greentech Air Refining Device \*1



---

## Model **D10**

For Power Generator/Lawnmower

Suitable Fuel Type: Diesel Fuel

Tank Capacity: Less than 100 liters

Content: Greentech Molecule Enhancer \*1




---

## Model **D11**

For Diesel Vehicle

Suitable Fuel Type: Diesel Fuel

Tank Capacity: Less than 100 liters

Content: Greentech Molecule Enhancer \*1

Greentech Air Refining Device \*1




---

## Model **D21**

For Diesel Vehicle

Suitable Fuel Type: Diesel Fuel

Tank Capacity: Less than 200 liters

Content: Greentech Molecule Enhancer \*2

Greentech Air Refining Device \*1



## Moletech Auto Products



### Moletech Wireless Alarm

Moletech Wireless Alarm's distinguishing feature is that it will notify the vehicle owner through the wireless pager immediately whenever there is a vehicle burglary or theft. Moletech Wireless Alarm is very different from the traditional car security lock. It is a steering wheel lock which provides air pressure detection, ultrasound detection, and vibration detection. When thief burglars the car, no matter through door opening, window breaking, or towing, the lock body will blare loud immediately for 10 seconds to frighten the burglar or thief and also notify the vehicle owner through the wireless pager within 2.5 kilometer distance, so the vehicle owner will not be helpless when burglary or theft happens.





## Main Functions:

- Air Pressure, Ultrasound, Vibration Detection
- 2.5 Kilometers Wireless Distance
- Door Open/ Window Break/ Intrude/ Crash/ Tow/ In-Car Movement/ Wheel Removing Warnings
- 120 dB Alarm with Red LED Light
- Smart Automatic Power Saving Function
- 360 Degree Lock Disc Cylinder/ 8 Security Passwords/ Rockwell Harness Testing
- No Need of Installation



## Moletech Vehicle Computer

After four years of research and development, Moletech successfully overcome the weakness of the normal computer and finally present you the best combination of car stereo and Real Auto PC system: MOLETECH VEHICLE COMPUTER.



Moletech Vehicle Computer is specifically designed to withstand harsh environments, sustaining extreme shock, vibration and temperature condition. It is a 2 DIN infotainment system with LCD and user friendly touch screen control. Embedded a 5.1-channel car stereo with a personal computer system, it supports GPS navigation, digital TV, rearview camera, wireless communication, car radio, Bluetooth equipments (phone), picture/music/movie player, EQ sound stage, and smart power control. All the features can be accessed via a 7 inch touch screen, and its dual independent displays are easily controlled by driver and passengers. Also, it equip with multimedia graphic user interface allows an easy accessibility to everyday use program and brings you a vehicle infotainment computing runway whole the driving.

### **Main Functions:**

- 7" Touch-Screen TFT LCD (LED Backlight)
- Windows XP System with Recovery Scheme (Easy to recover the operating system)
- Smart Power Control (Automatic On and Off)
- Smart EQ sound-stage/ 5.1-Channel Audio Output
- Built-In Auto Scan AM/FM Radio (9AM/18FM Station Presets)
- Moletech Graphic Users Interface (Easy to access many functions)
- Wi-Fi/ Bluetooth/ GPS/ Phone Communication/ DVD-ROM/ Front USB, SD Card, AUX In
- Support Dual Independent Display/ Rearview Camera/ Digital TV/ Windows Navigation Software



## Warranty & Guarantee Policy

### Warranty:

Greentech Fuel Saving Device is warranted for twelve (12) months from the date of purchase against defects.

Note:

- 1) Products damaged as a result of abuse, misuse, improper repairs or maintenance, improper installation, alteration, or modification will not be covered by the warranty.
- 2) The warranty does not cover airfreight charges, labor expenses, towing expenses, or rental car expenses resulting from installation errors. Return shipping is the responsibility of the buyer. We will not reimburse any return shipping charges incurred.

---

### Guarantee:

1. All the products are made by an ISO 9001 and ISO 14001 certified manufacturer.
2. All the product materials are environmentally friendly and conformed to the RoHs standard.
3. None of the products can be dissolved by fuel.
4. None of the products contain chemicals catalysts.
5. All the products are covered by liability insurance.

---

For more information about Moletech Auto Products,  
please visit [www.moletech.com](http://www.moletech.com).





[www.greentechsaver.com](http://www.greentechsaver.com)

GREENTECH, GO GREEN!

